



Friendship Cohousing Community

Maningham

Information for Enquirers

Would you like to live as part of the Friendship Cohousing Community at Maningham? This leaflet will give you more information to help you decide if Maningham is for you.

Maningham

Maningham is on the edge of Illogan village near Redruth, Cornwall. Portreath, an old traditional port with a beautiful Cornish beach, is a short walk through the woods, and Tehidy Country Park is close by.

The house was built as a rectory by Francis Basset in 1783. The eastern extension was built in 1828 and the kitchen extension, conservatory and buildings in the yard built after 2000.

There are 4 acres of lawns, flowering shrubs and native woodland, and a further 3 acres of woodland is leased as Illogan Community Woodland.



Our Community

We purchased Maningham in March 2021. The community is a diverse group of people, 17 of us living here; the youngest is 7 years old and the oldest is 84. We are spiritually aware and welcome all faiths.

We each have a private bed room and share this beautiful house which has many lovely communal rooms and spaces.

We are accepting of all dietary preferences including vegans, vegetarians and an ethical omnivorous diet. We have some chickens, would like more animals and grow some of our food.

We wish to develop a more resilient way of living, increasing our sustainable use of water, energy and materials.



This is a fairly new community that is still learning and growing together. We are developing links with local people and have regular open days, and workshops for learning new skills. We are developing practices of self-sufficiency, permaculture, rewilding, herbal medicine and spiritual awareness.



Our Vision

Live by the values of truth, peace, equality and simplicity
 Be a loving community looking for goodness in all people
 Become a pattern and example of sustainable living
 Hold Maningham as a nurturing spiritual place offering care and support
 Maintain, at our core, love and care for the planet and all beings.

What we're offering and looking for

We offer a place to live simply, in an intentional community, where you will have a bedroom for your own quiet time, and be part of a community sharing many day-to-day activities.

We frequently cook and eat together, buy our food in bulk, and share growing spaces in the garden. We have groups for tasks such as shopping, cleaning, grounds and building maintenance, and running the finances, whilst having time to enjoy the peace and “do our own thing”.

We are seeking people committed to the idea of living with care and compassion in our community, who try to be mindful and spiritually aware, and who wish to live close to nature and help each other through personal difficulties with kindness.

Taking responsibility for our own decisions and behaviours, and having a commitment to change and personal growth, can be very difficult and takes energy and time, and is helped by the support of other community members.



Joining process

If you are interested in joining our Community please come and visit us for an Enquirers' Weekend.

If you wish to continue towards membership, then come again for a working weekend.

After that, the next step is to come and live here as a 'prospective member' for 3 months. During this time, you will get to know all of us and see whether you like living together in Maningham with us. And we, with you.

Towards the end of the three months, you will meet with two of us to review how it has gone and whether the next step is to apply to be a full member of our community.

As a full member, you will pay a monthly licence fee, a service charge, and a variable contribution towards building maintenance. An alternative to the Licence Fee is to provide a Loan which reduces our mortgage and our mortgage payments by the same amount as the Licence Fee for your chosen bedroom. We will explain more about this when you visit. Loaning capital is optional.



Enquirers' Weekends

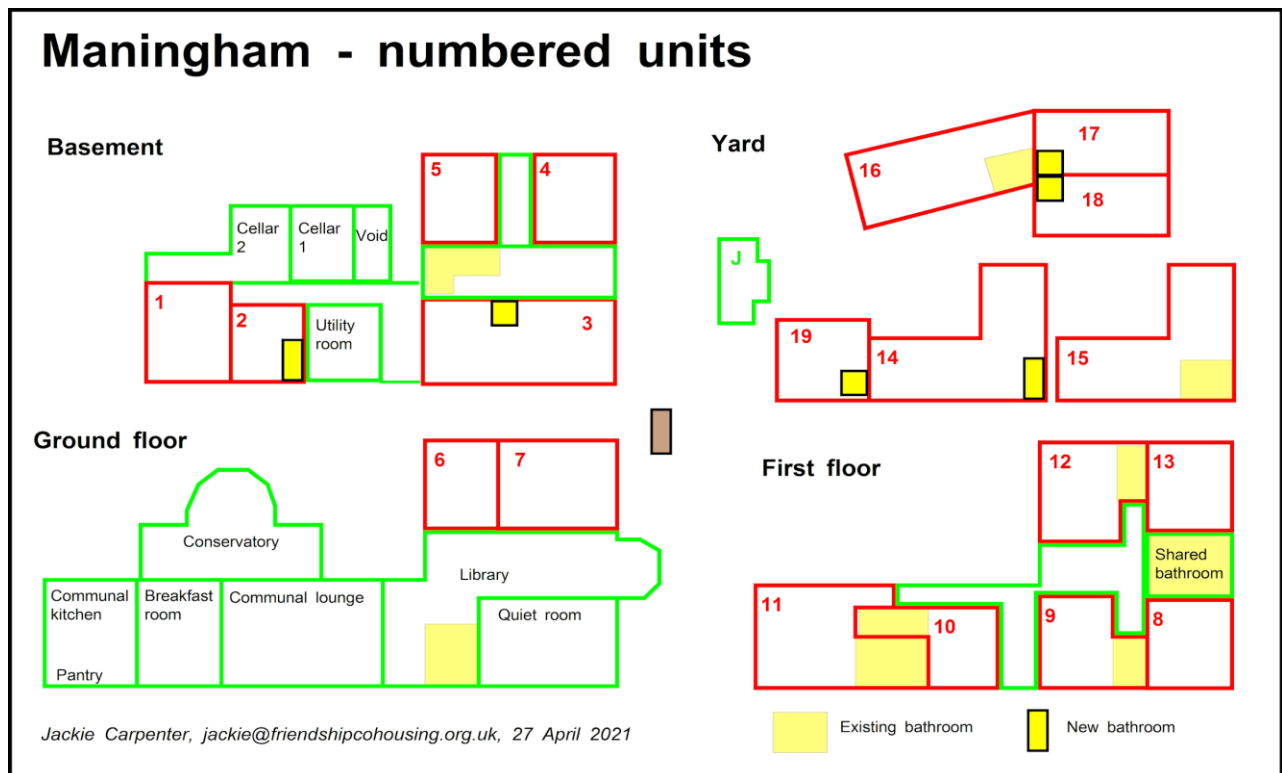
Please ask about our next Enquirers' Weekend, usually on the second weekend of the month. It starts at 10am on the Saturday and lasts until Sunday lunchtime. Some Enquirers may wish to arrive Friday evening, or stay on after Sunday lunch.

You will be shown around the house and garden, meet our members, and hear about how we live together as a community, sharing cooking, gardening, and doing the many daily chores and essential building maintenance tasks. We will outline the legal and financial arrangements that ensure our continuity as a thriving community.

If you wish to stay the night, we may have rooms available, usually around £30 per person, including food. If we don't, we can suggest some local places to stay, such as the nearby YHA.

Private Units

We have divided Maningham up into 19 private units as shown on this plan.

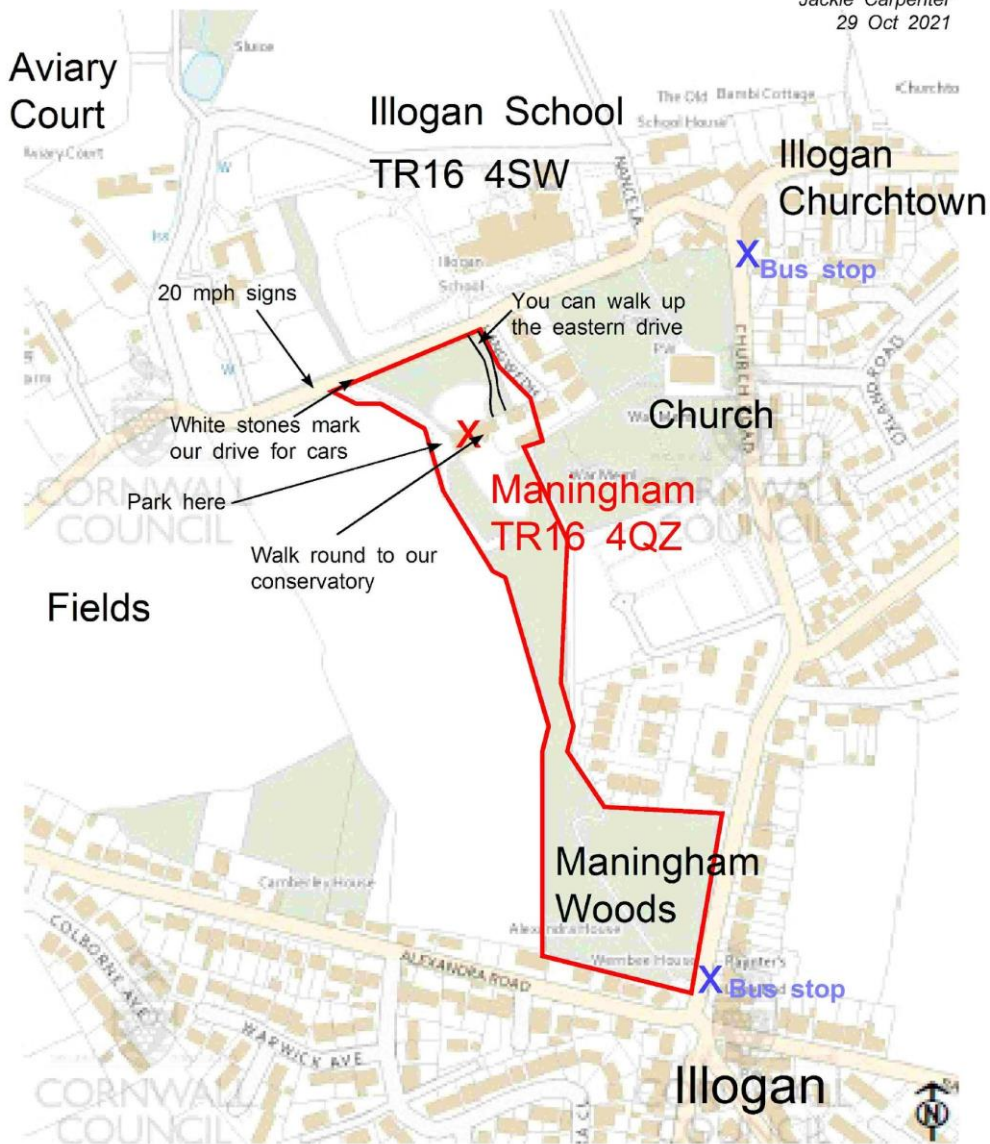


As an example, one of our smaller rooms, which has a view over the gardens and ensuite shower-room, is valued at £97,020 or £549 a month for a full member. This includes shared use of all the communal rooms and grounds.

All members pay a service charge of £180 per month for the community charge, internet and TV, utility bills and house insurance. There is a variable optional contribution towards building maintenance. Most people also pay into our shared food kitty for all meals.

How to find Friendship Cohousing Community at Maningham

Jackie Carpenter
29 Oct 2021



Maningham: what3words = cosmic.informed.joggers